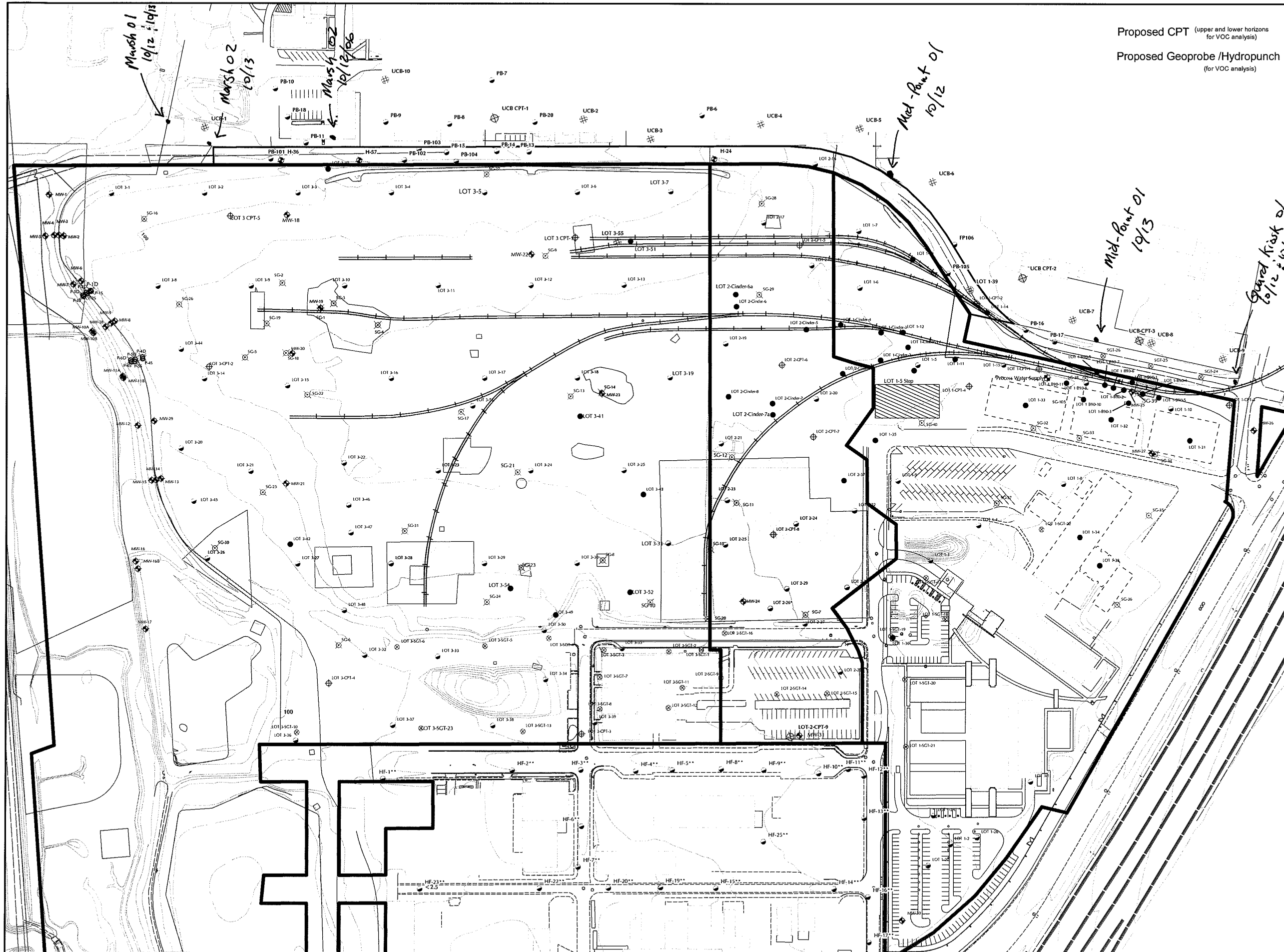
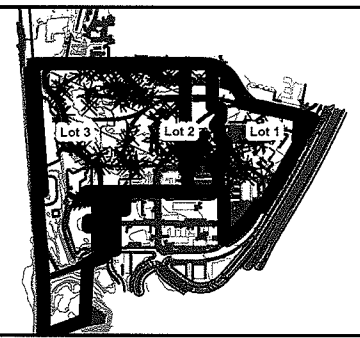


K:\001_ENV\09555_NSOUGIS\Projects\Most_Current_Conditions\Fig_1_Romab_Zoom.mxd 08/17/06

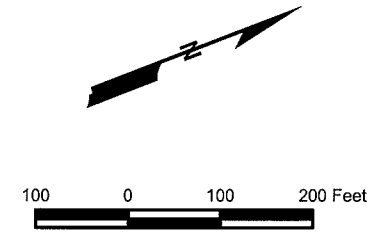


Proposed CPT (upper and lower horizons for VOC analysis)
 Proposed Geoprobe /Hydropunch (for VOC analysis)



LEGEND

- Lot 1-11 ● Location of soil boring
- Lot 1-1 ○ Location of soil boring w/ grab groundwater sample
- Lot 1 CPT-1 ⊕ Location of cone penetrometer test boring with groundwater sample(s)
- HF-1*** ● Grab groundwater samples collected by representatives retained by the Department of Toxic Substances Control, December 2005 - January 2006
- Process Water Supply-1 ⊕ Process Water Supply Well (not in use)
- MW-1 ⊕ Location of monitoring well
- P-1 s/d ⊕ Location of piezometer (shallow and deep)
- SGT-1 ⊕ Location of soil gas point
- SG-1 ⊕ Location of soil gas monitoring well
- Railroad spurs removed
- Lot 1, 2, and 3 Boundary
- ▨ Arsenic Excavation
- Excavation Area
- ▬ Habitat Enhancement Area Boundary
- ▬ Property boundary
- ▭ Building
- ▬ Road
- ▭ Building removed
- 2-ft contour interval



Proposed Additional Sampling Locations

Campus Bay, Richmond, California



Figure 1