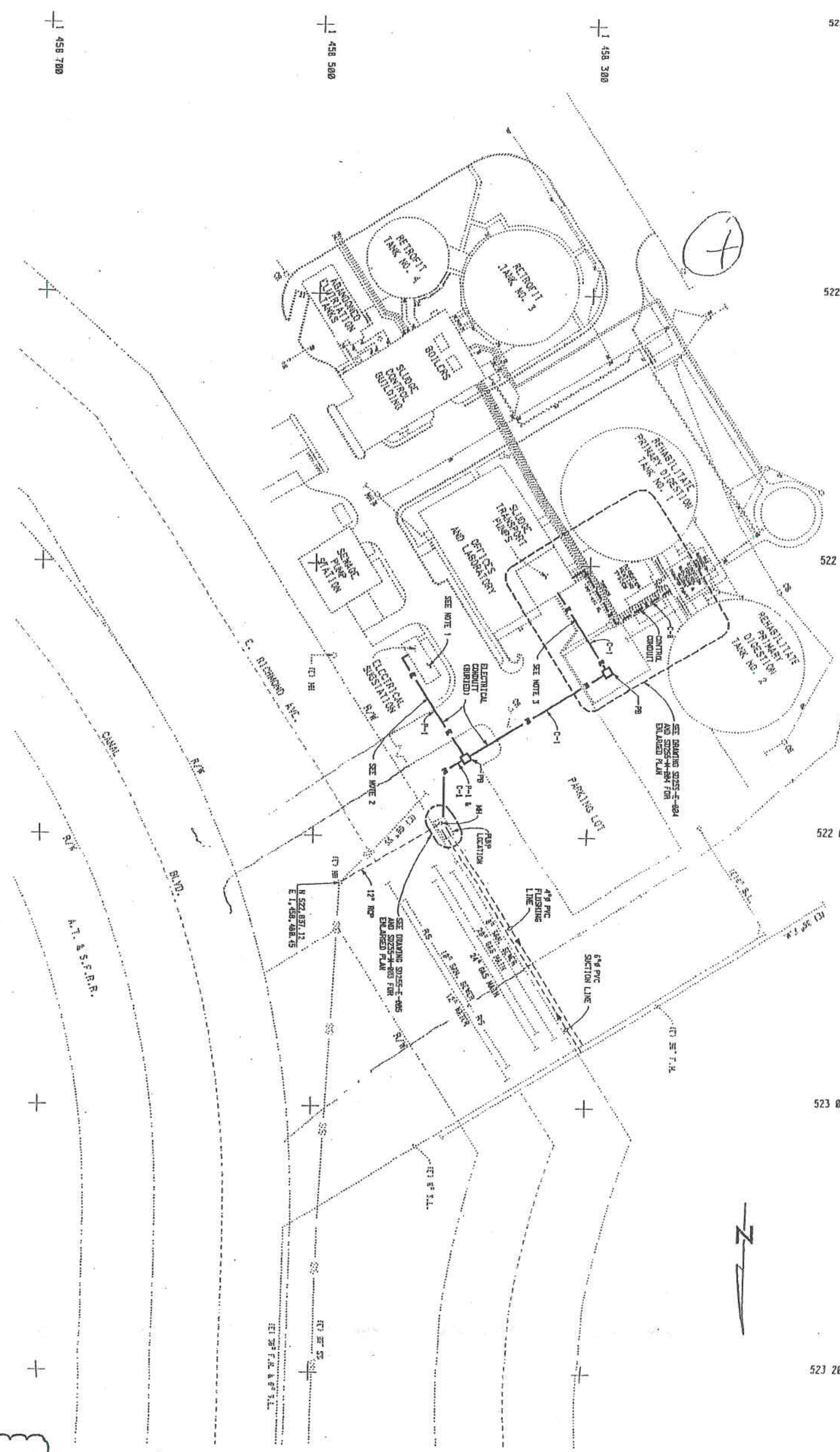


522 200
 522 400
 522 600
 522 800
 523 000
 523 200



SITE PLAN

ATTACHMENT 1-9

3" ON ORIGINAL DOCUMENT

NO.	DATE	REVISION
1	2/28/03	APPROVAL No. 1

MEF ENGINEERS, INC.
 7700 Espinosa Drive, Suite 222, Oakland, CA 94621
 Phone: (510) 363-0500 Fax: (510) 363-1571

DESIGNED BY	D. DAVIS
CHECKED BY	SAKAI/CDO
DATE	2/28/03
SCALE	AS SHOWN
PROJECT NO.	00255
DRAWING NO.	SD255-E-003



EAST BAY MUNICIPAL UTILITY DISTRICT
 SPECIAL DISTRICT No. 1
 OAKLAND, CALIFORNIA
 CITY OF RICHMOND WPP
 ELECTRICAL
 WEST COUNTY LANDFILL BYPASS PIPELINE

- SHEET NOTES:**
1. INSTALL NEW 7/8" CONDUIT BEGINS WITH TERMINAL BLOCK WIRE REPLACEMENT. SIZE #4 WIRE/4 BLDG.
 2. RUN CONDUIT UNDERGROUND IN DUCTBANK. STUB-UP IN ELECTRICAL SUBSTATION AND RUN EXPOSED CONDUIT OVERHEAD TO FEED INTO EXISTING PANEL ROOM.
 3. RUN CONDUIT UNDERGROUND DUCTBANK. STUB-UP INTO SLUDGE PIPE BUILDING AND RUN EXPOSED CONDUIT OVERHEAD TO FEED INTO EXISTING PANEL. "A"