



# UC Berkeley Richmond Field Station Remediation and Restoration Project

January 16, 2008  
Town Hall Meeting

## Agenda

1. Project Background
2. Recent Activities
3. Next steps





San Francisco

Brooks Island

Marina Bay

EBRPD Bay Trail

Stege Marsh

Meeker Slough

Former  
Zeneca

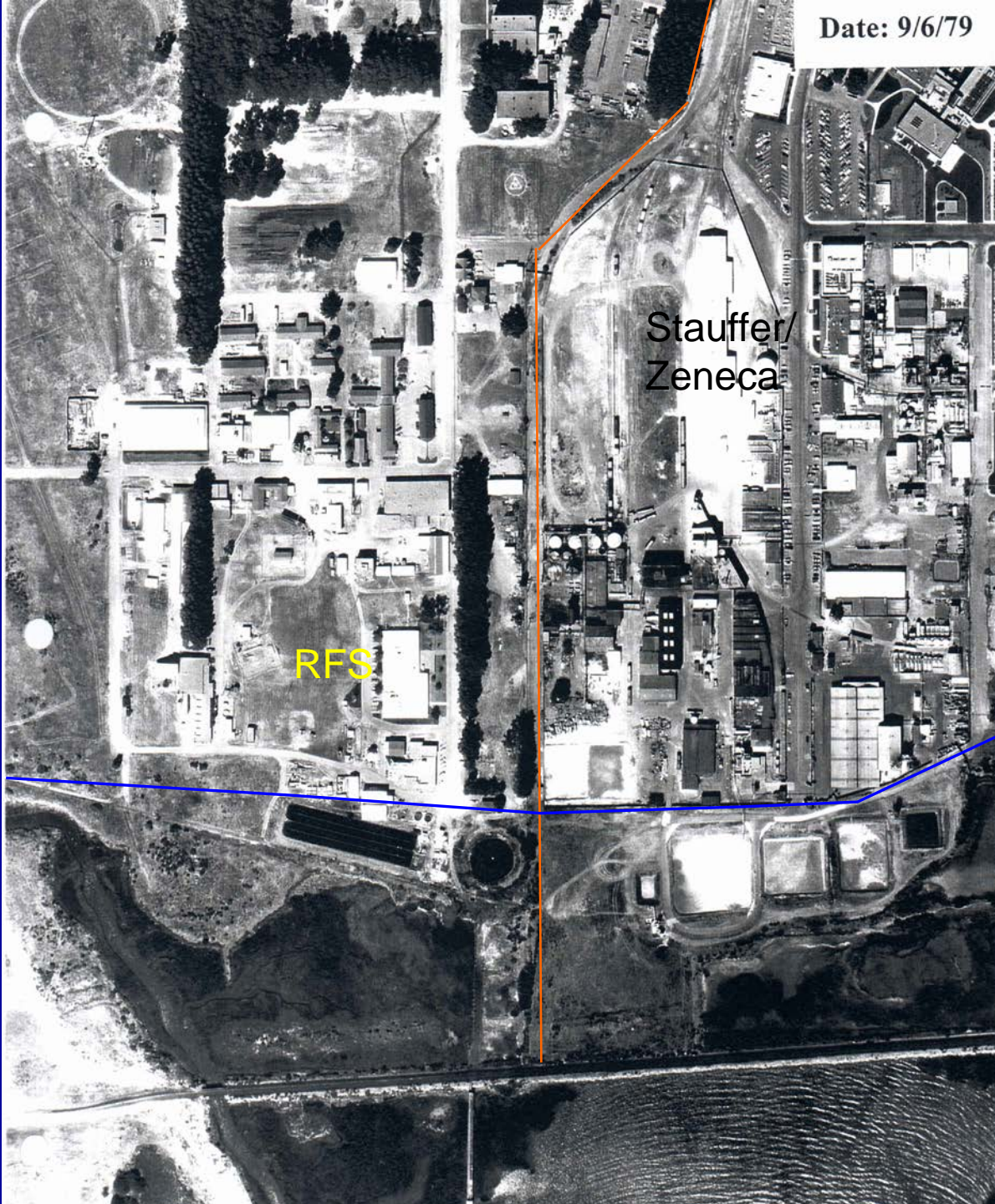
RFS



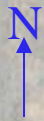
Date: 9/6/79

Stauffer/  
Zeneca

RFS







RFS

Hg  
Plant

PCB  
Area

Marsh

Zeneca  
Cinder  
Landfill

1999 Bay Protection and Toxic Cleanup Program  
Field Sampling and Analysis Results

# RFS Site Timeline and Regulatory Oversight

- 1980s- 1990s Miscellaneous investigations/ EPA Lab  
1993
- May 1999 Investigation Order Bay Protection Toxic  
Cleanup Program
- Oct. 2001 RWQCB Board Order Cleanup
- Sep. 2002 – Jan. 2003 Phase 1 Cleanup
- Aug. 2003 – Mar. 2004 Phase 2 Cleanup
- Sep. 2004 – Nov. 2004 Phase 3 Cleanup
- May 2005 Agency jurisdiction transferred to DTSC
- Sept. 15, 2006 DTSC Order





Contaminated Stege Marsh prior to clean up









# Summary of Remedial Activities to Date

- Major source areas were removed.
- More than 60,000 cubic yards of material removed from RFS Site.
- Two major marsh phases.
- One major and one smaller upland phase.

# Western Stege Marsh Restoration



March 2005  
one year after  
Phase 2 excavation  
and back-fill



June 2006



RFS Remediation and Restoration Project  
Recent and Current Activities  
January 2008

1. Draft Current Conditions Report April 2007
2. Forest Products Laboratory Former Wood Treatment Lab Time Critical Removal Action (TCRA)- October 2007
3. Non- hazardous soil disposal
4. Marsh edge restoration planting
5. Other ongoing activities

# April 2007

## Detailed history of site investigations

## Data on current chemical concentrations

## Planning for future work

<http://rfs.berkeley.edu>





# Current Conditions- Department of Public Health Draft Public Health Assessment

August 2007 - DPH Draft PHA concluded:

- Walking on the grounds at the RFS or on the Bay Trail does not pose a health risk.
- There is no evidence that indoor air quality poses any health hazard.

DPH recommendations-

- Additional worker training
- Follow-up air monitoring
- Keep staff up-to-date













# Next Steps and Other Ongoing Activities

- Completion of the Current Conditions Report
- Complete a Field Sampling Workplan
- Surface Water Monitoring
- Invasive Vegetation Program
- Marsh Monitoring
- Feral Animal Management Program
- Review of neighboring sites

# Facility Usage Approval

Prior approval is required for any activities that could disturb soils or sensitive habitats or the endanger California clapper rail

Digging, planting, collecting

Written request must be submitted to the RFS Manager John Felling (665-3402).

## University of California at Berkeley Richmond Field Station Facility Usage Guidelines

The Richmond Field Station (RFS) is a 128 plus acre multiuse facility operated by the University of California at Berkeley for teaching, research and service. The facility is managed by the College of Engineering (COE); they provide facility maintenance and coordination of ongoing activities. The University has made major investments in the field site both in terms of research facilities, in remediation of contamination resulting from historical activities, and enhancement of ecological resources for research and broader education purposes. As with all space, allocation is ultimately controlled by the Chancellor.

The University has entered an era where multiple demands are being made on the field site both internally and externally. This requires oversight of all continuing and proposed activities. The following procedures have been developed to provide that oversight.

1. Any proposal for use of the facility must acknowledge that they have read the disclosure packet of environmental concerns found at RFS that has been prepared by the COB facility management.
2. Written proposals for facility usage must be submitted for review and approval. The proposal should be a brief one to two page description of the group and the type of activity that will be undertaken at RFS. The following information is needed:
  - a. Name and number of personnel involved in the group.
  - b. The group leader, president or director name (include email and phone information).
  - c. UC affiliation (i.e. department, club, UC sponsor, etc).
  - d. Type of space or land required (i.e. 1200 sq. ft. of office and lab space or 2500 sq. ft. of land space).
  - e. Description of the type of work planned to be done at RFS.
  - f. Description of any materials that are planned to be removed from RFS.
  - g. Drawings or sketches of proposed facility changes or improvements.
  - h. Chemical inventory and chemicals usage (types, quantities and use).
  - i. Other potential environmental emissions that the project may generate (i.e. engine exhaust, strong odors, loud noises, etc).
  - j. Specialized equipment that will be used (i.e. electron microscopes, robotic vehicles, helicopters, etc).
  - k. Special access requirements (i.e. large trucks, marsh access, grasslands studies, after-hours access, etc).
  - l. Power, water and natural gas requirements (if any).
  - m. Phone and network requirements (if any).
3. RFS Facility Request Approval Process:
  - a. Facility requests should be forwarded to RFS Manager John Felling
    - i. Phone 665-3402/fax 665-3492
    - ii. Email: jfelling@berkeley.edu
  - b. Campus Mail: Richmond Field Station, Building 478, room 104, MC 3580.
  - c. Proposals will be screened by John Felling and forwarded for necessary reviews and approvals based on:
    - i. Campus Planning concerns (Kevin Huffard, Jennifer Lawrence).
    - ii. EH&S compliance (Greg Haet, Karl Hans).
    - iii. Other special campus compliance groups (if necessary).
  - d. Approval by the COE Dean's Office (Scott Shackleton).
  - e. Approval by Vice Provost of Academic Facilities, Kathy Koshland.





# California Clapper Rail Conservation

*Railis longirostris obsoletus*

Federally listed endangered species that inhabits Western Stege Marsh

Once abundant; has suffered from hunting, predation by feral cats and rats, and from habitat loss

Approximately 1,000 rails left.

Illegal to disturb the clapper rail

All marsh activities must be approved by EH&S and RFS Facilities.





# *RFS Environmental Website:*

<http://rfs.berkeley.edu>

## UC Berkeley Richmond Field Station



University of California, Berkeley

Principal source for  
RFS environmental  
news

Updated frequently

[rfs.berkeley.edu](http://rfs.berkeley.edu)

### Resources

[Home](#)  
[About RFS](#)  
[Contacts](#)  
[For Faculty, Staff & Students](#)  
[Community Advisory Group](#)  
[Remediation Project Fact Sheet](#)  
[Technical Documents](#)  
[Air Monitoring Data](#)  
[Construction Schedule](#)  
[Restoration](#)  
[Regulatory Agencies](#)  
[FAQ](#)  
**Non-UC Resources**  
[Air Quality Concerns](#)  
[Health Agencies](#)  
[Local and State Govt.](#)  
[Neighboring Sites](#)  
[The Watershed Project](#)

### Welcome

The RFS Environmental Website serves as a principal and current source for environmental news, monitoring data and resources for the UC Richmond Field Station community (UC staff, faculty and students, non-UC tenants, and visitors). This website allows for convenient access to information.

If you have questions, concerns or suggestions related to the environmental remediation project, we're here for you.

If you have any questions - from human resources issues to environmental health inquiries - please [contact](#) us. A [list](#) of names, phone numbers and other resources are available for you.



### News

#### Current News

**02/02/06** [DHS CCHSD Health Statement Update](#)  
**01/31/06** [Monitoring Well Field Closure Project Starts 1/31/2006](#)  
**01/10/06** [DTSC Investigation of Fill Area Finds Scrap Metal, No Drums](#)  
**01/05/06** [Updated FAQs Address Questions about Arsenic and Exposure to Pollutants in the Marsh](#)  
**01/05/06** [Next Community Advisory Group \(CAG\) Meeting Wednesday February 8, 2006, 6:30-9:00 p.m.](#)

#### Archived News

#### Current Conditions



[BAAQMD Weather Station](#)

# QUESTIONS?

